



# April Newsletter

Term Dates and Upcoming Events	
Tuesday April 2 <sup>nd</sup> - Friday April 12 <sup>th</sup> 2024	Easter Holiday (No Free Early Education or Working Family Entitlement Funding)
Friday 12 <sup>th</sup> April 2024	Last day to sign funding forms for term 5/6
Monday 15 <sup>th</sup> April 2024	Term 5 Funding Begins
Monday 6 <sup>th</sup> May 2024	Early May Bank Holiday <b>Nursery Closed</b>
Wednesday 15 <sup>th</sup> May 2024	Dragonflies Mark Making Stay & Play
Wednesday 17 <sup>th</sup> May 2024	Bumblebees' world bee day Stay & Play
Friday 31 <sup>st</sup> May 2024	Caterpillar Physical Development Stay & Play
Friday 24 <sup>th</sup> May 2024	Last Day of Funding for Term 5
Friday 31 <sup>st</sup> May 2024	Butterflies getting ready for school workshop
Monday 27 <sup>th</sup> May 2024	Late May Bank Holiday <b>Nursery Closed</b>
Tuesday 28 <sup>th</sup> May 2024-Friday 31 <sup>st</sup> May 2024	Half Term
Monday 3 <sup>rd</sup> June 2024	Term 6 Funding Begins
Monday 17 <sup>th</sup> June 2024	Dragonflies Father's Day Stay and Play
Wednesday 18 <sup>th</sup> July 2024	Last Day to sign Funding Forms for Term 1/2
Monday 22 <sup>nd</sup> July 2024	Last Day of Funding for Term 6
Monday 26 <sup>th</sup> August 2024	August Bank Holiday <b>Nursery Closed</b>

## September School Placements

For those of you that will have children heading off to primary school in September, could we please ask that you let us know where your child will be attending reception so that we can coordinate their transition with their new school. You can either let a member of the butterfly team know or send it through to [parents@radnorparkkindergarten.com](mailto:parents@radnorparkkindergarten.com)



## Funding Forms



If you have not already signed your funding form for the upcoming terms 5 & 6, please speak to a member of staff ASAP to ensure that you don't miss out on receiving your funding.

## TAX Free Childcare

You can get up to £500 every 3 months (£2,000 a year) for each of your children to help with the costs of childcare.

If you get Tax-Free Childcare, the government will pay £2 for every £8 you pay your childcare provider. This is paid via an online childcare account that you set up for your child.

You can get Tax-Free Childcare at the same time as 30 hours free childcare if you're eligible for both.

<https://www.gov.uk/tax-free-childcare>



## Packed Lunches

Please can we remind all parents to follow our packed lunch policy.

Lunches should **NOT** include-  
Chocolate bars- Twix/Mars etc.

Sweets

Juice/Fizzy Drinks

**Nuts, Nut Products or any items that may contain nuts**

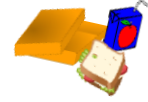


### Sandwiches should not include

Sweet spread fillings- Jam/Honey/Nutella

Nut Spreads- Peanut butter, almond butter etc.

Salty Fillings such as Marmite

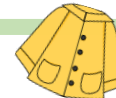


For further information relating to your child's packed lunch please see our packed lunch policy which can be found on our website or from our administrator.

For those of you who are providing a packed lunch for your child could we please also remind that we are unable to reheat children's lunches, unless they are attending in the Ladybird / Baby Unit section



## Outside Wear & Spare Clothes



It is gearing up to be a very wet and windy start to spring. Could you please ensure that your child has appropriate clothing for the garden and outdoor play including coats, boots, hats, and spare clothes.

We like to get the children out even in inclement weather and don't want anyone to miss out.

Could you also please ensure that you send in at least two changes of clothing for your little one including socks and underwear. We love to get the children involved in messy play and want to ensure they always have something warm and comfortable to change into afterwards if needed. To ensure that the right clothing goes home with the right child please can we ask you to label all clothes and equipment that is sent to the nursery with your child's name.

Lastly could any borrowed clothing please be returned to the nursery so that we have extras on hand should another child need them.



## Ladybirds (Babies)



Room Leader: Ellie

Supervisor: Vicky

Apprentice: Emily

Practitioner: Tierney

### Books of the Month

- Hello Spring
- Tractors
- The Hungry Caterpillar's First Spring

We will be talking a lot about spring, how things grow and baby animals. We will be focussing our activities and play around these themes throughout the month.

As the weather starts to turn drier and warmer we would like to ask that children bring in coats, waterproofs and shoes/boots so that we can get out into the garden more often. We would also like to ask that parents send through some family photos for our wall. The children really love to be able to see their families and interact with the photos. You can either send a photo through on the parentzone app or email it to [parents@radnorparkkindergarten.com](mailto:parents@radnorparkkindergarten.com).



## Bumblebees (Toddlers)



Room Leader: Leyla  
Supervisor: Hayley

Practitioner: Demelza  
Apprentice: Suzie

Apprentice: Shannon

### Books and Activities of the Month

- Spring- Exploring a range of spring themed activities
- Plants and Flowers- Learning about different plants and flowers
- My First Sign- Exploring Makaton & Sign language

### Themes & Special Days

- World Art Day Monday 15<sup>th</sup> April- We will be having a very messy day exploring tools, paint and more.
- Earth Day Monday 22<sup>nd</sup> April- We will be looking at how to look after our planet

Could we please kindly ask that children are being sent in with changes of clothes for the day (at least 2 sets including socks). Our bumblebees tend to get quite messy and need to be changed regularly to keep them comfortable. We also try to get the children outside on a daily basis and would ask that you also ensure your child has shoes and coats brought in with them so that they do not miss out.

For those of you who are providing a packed lunch for your child could we please also remind that we are unable to reheat children's lunches.



## Dragonflies



Room Leader: Stevie  
Supervisor: Katy

Practitioner: Stephanie  
Apprentice: Keira

Apprentice: Amber

### Books & Activities of the Month

- Elmer- Explore colours and patterns. The difference between ourselves and others.
- Superworm- Exploring the garden inside and digging for worms and other insects.
- The Tiny Seed- Talking about growing, planting and the weather
- Brown Bear "What do you see"- Exploring senses and our environment
- That's not my lamb- Learning about farm animals, spring and growing from babies

With the weather hopefully getting a bit sunnier, we have hopes that we are able to get out in the garden more often. With this in mind could we please ask that your child brings in appropriate weather clothing and some boots if they have them to change into.



## Caterpillars



Room Leader: Sarah  
Practitioner: Arpana

Practitioner: Stephen  
Practitioner: Lucie

### Book of the Week

- The lion inside
- Jack and the Beanstalk
- Superworm
- Here we are
- A squash and a squeeze

Themes: Spring, Flowers, Changing weather, Baby Animals and life cycles

This month we are going to be re planting our seedlings and looking out for new growth around the garden, please feel free to upload any pictures of things growing you may encounter when out and about.

We are still looking for any gardening supplies you may have and no longer need, especially books and magazines for the children to explore and would appreciate any donations from parents. Thank you.

As the warmer months approach if your child would like to start bringing in their own water bottle, we will be setting up a tray next to the water station to promote staying hydrated in the warmer weather.



## Butterflies



Room Leader: Ciara  
Supervisor: Shannon

Practitioner: Shay  
Practitioner: Lainey

Apprentice: Molly

### Books of the week:

- Jack and the Beanstalk
- The Very Hungry Caterpillar
- The Worrysaurus
- Chicken Licken

### Themes and Special days:

- Spring- Changing of the season
- Animals and their babies
- In the garden and plant life cycles
- Mini Beasts and bug life cycles
- Dinosaurs
- Earth Day- Monday 22<sup>nd</sup> April-We will be attempting to make our own recycled paper
- Beep Beep Day Wednesday 24<sup>th</sup> April- Brake charity with Timmy Time to promote road safety
- St George's Day- Tuesday 23<sup>rd</sup> April- We will explore this with junk modelling, making our own castles and flags.

A huge thank you to those who attended the Mother's Day Afternoon tea and for making it so magical for the children. Both afternoons were so lovely and the children were so proud to have their mummies there. We couldn't have done it without you!

## Do you know who you can talk to?

If you have any queries or concerns, big or small, or you would like to talk to someone about your child. We are here to help!



**Ting Healey Owner-**  
Invoices, Funding,  
Sessions and FEE'S



**Emily Sargeant  
Setting Manager-**  
Designated Child  
Protection Officer,



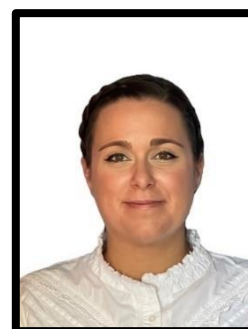
**Emma Reene Deputy  
Manager-** Special  
Educational Needs and  
Disability Officer, Deputy



**Tracey Leighton Duty  
Manager-** Health and  
Safety Officer, Deputy  
Designated  
Safeguarding Lead



**Chloe Tidy Duty  
Manager-** Online  
Safety Co-Ordinator,  
Deputy Designated  
Safeguarding Lead



**Brenley Martin  
Administrator-** New  
Applications,  
Funding Support,  
Sessions and FEES

# Community Support & Wellbeing Resources

## Food & Essentials

The Salvation Army: [salvationarmy.org.uk/Folkestone](http://salvationarmy.org.uk/Folkestone)

Hythe Pantry: [www.facebook.com/RainbowCentre01](http://www.facebook.com/RainbowCentre01)

Dover Pantry: [www.facebook.com/doverpantry](http://www.facebook.com/doverpantry)      [twitter.com/Doverpantry](https://twitter.com/Doverpantry)

Bechange Community Fridge: [www.bechange.org.uk/support-services/community-fridge](http://www.bechange.org.uk/support-services/community-fridge)

Folkestone Community Fridge: [www.facebook.com/Folkestonecommunityfridge](http://www.facebook.com/Folkestonecommunityfridge)

The Bread & Butter Thing (weekly food bags): [www.breadandbutterthing.org/members](http://www.breadandbutterthing.org/members)

Food Sharing Apps: OLIO (Connects neighbours with each other and local businesses)

Too Good to Go (Anti food waste app linked to local café's & restaurants)

## Financial Support

Help for Households: [www.helpforhouseholdscampaign.gov.uk](http://www.helpforhouseholdscampaign.gov.uk)

Cost of living Support: [www.gov.uk/cost-of-living](http://www.gov.uk/cost-of-living)

Citizens Advice: [citizensadvice.org.uk/dept-and-money/get-help-with-the-cost-of-living](http://citizensadvice.org.uk/dept-and-money/get-help-with-the-cost-of-living)

Home Essentials in a Crisis: [kent.gov.uk/social-care-and-health/care-and-support/benefits/home-essentials-in-a-crisis](http://kent.gov.uk/social-care-and-health/care-and-support/benefits/home-essentials-in-a-crisis)

## Mental Health

NHS Psychological Therapies Service- [www.nhs.uk/services/mental-health/find-a-psychological-therapies-service](http://www.nhs.uk/services/mental-health/find-a-psychological-therapies-service) (Common mental health issues including anxiety, depression and the need for counselling)

Folkestone Safe Haven: [www.hestia.org/folkestone-and-hythe-district](http://www.hestia.org/folkestone-and-hythe-district)

South Kent Mind: [www.southkentmind.org.uk](http://www.southkentmind.org.uk)

Lighthouse43: [www.lighthouse43.co.uk](http://www.lighthouse43.co.uk)

Samaritans: Call 116 123

Mind Information Line: 0300 123 3393

Rethink Mental Illness Helpline: 0808 801 0525