



November Newsletter



Term Dates and Upcoming Events	
Monday 6 th November 2023	Butterfly Stay and Play
Thursday 16 th November	Butterfly Show & Tell
Friday 17 th November	Bumblebee Stay & Play
Friday 17 th November	Children in Need Pyjama Day
Thursday 14 th December 2023	Last Day to sign funding forms for terms 3/4
Friday 15 th December 2023	Christmas Lunch and visit from Father Christmas
Friday 15 th December 2023	Last Day of Funding for Term 2
Monday 25 th December -Monday 1 st January 2024	Christmas Holidays Nursery Closed
Tuesday 2 nd January 2024	Nursery Re-Opens from 8am
Friday 5 th January 2024	Term 3 Funding Begins
Friday 9 th February 2024	Last Day of Funding for Term 3
Monday 12 th February- Friday 16 th February 2024	Half Term
Monday 19 th February 2024	Term 4 Funding Begins
Wednesday 27 th March 2024	Last Day to sign funding forms for terms 5/6
Thursday 28 th March 2024	Last Day of Funding for Term 4
Friday 29 th March 2024	Good Friday Nursery Closed
Monday 1 st April 2024	Easter Monday Nursery Closed
Monday 15 th April 2024	Term 5 Funding Begins
Monday 6 th May 2024	Early May Bank Holiday Nursery Closed
Friday 24 th May 2024	Last Day of Funding for Term 5
Monday 27 th May 2024	Late May Bank Holiday Nursery Closed
Tuesday 28 th May 2024-Friday 31 st May 2024	Half Term
Monday 3 rd June 2024	Term 6 Funding Begins
Wednesday 18 th July 2024	Last Day to sign Funding Forms for Term 1/2
Monday 22 nd July 2024	Last Day of Funding for Term 6
Monday 26 th August 2024	August Bank Holiday Nursery Closed

PLEASE



**NO PEANUTS
OR
NUT PRODUCTS**

Could we please remind all parents that due to allergies we are a nut free setting. Please do not send any nuts, nut products or items that contain nuts in with your child.

Children in need Pyjama Day!

As part of this years children in need fundraiser we will be holding a pyjama day on **Friday 17th November**. If you would like to participate there will be donation boxes available at each of our entrances.



Packed Lunches

Please can we remind all parents to follow our packed lunch policy.

Lunches should **NOT** include-
Chocolate bars- Twix/Mars etc.

Sweets

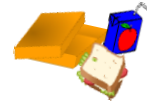
Juice/Fizzy Drinks

Nuts, Nut Products or any items that may contain nuts



Sandwiches should not include

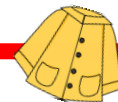
Sweet spread fillings- Jam/Honey/Nutella
Nut Spreads- Peanut butter, almond butter etc.
Salty Fillings such as Marmite



For further information relating to your child's packed lunch please see our packed lunch policy which can be found on our website or from our administrator.



Outside Wear & Spare Clothes



As we finally begin to see the lovely autumn weather, could you please ensure that your child has appropriate clothing for the garden and outdoor play including coats, boots, hats and spare clothes.

We like to get the children out even in inclement weather and don't want anyone to miss out.

Could you also please ensure that you send in at least two changes of clothing for your little one including socks and underwear. We love to get the children involved in messy play and want to ensure they always have something warm and comfortable to change into afterwards if needed.

Lastly could any borrowed clothing please be returned to the nursery so that we have extras on hand should another child need them.



Ladybirds (Babies)



Room Leader: Ellie
Supervisor: Vicky

Apprentice: Emily
Trained Level 2 practitioner and Level 3 apprentice: Tierney

Story of the week

- See, touch, feel
- Baby Sign
- Zoom to the moon
- I love you to the moon and back

Could we kindly ask that when bringing your children's belongings in that they be labelled. The baby room is very busy at the moment and we want to ensure items are returned to their proper owner at the end of each stay.

Themes of the Month

- Autumn & Leaves
- Woodland animals
- Fireworks & Stars
- Sensory play and Treasure Baskets



Bumblebees (Toddlers)



Room Leader: Leyla
Supervisor: Katie

Practitioner: Demelza
Practitioner: Hayley

We will be holding a sensory stay and play on Friday November 17th 4:30pm-5:15pm Please add your name to the sign-up sheet on our door if you would like to attend.

Themes & Activities

- See, Touch & Feel
- Colours & Bonfire Night- exploring a range of colourful activities with a variety of textures. Gluing, sticking, painting and a firework inspired sensory tuff tray.

Could we please remind parents of our packed lunch policy. Peanut butter and other nut products are not allowed within the setting due to allergies. Unfortunately, if nut products are sent in with lunches we will not be able to provide them to your child.

Please can you ensure that your child has a coat and appropriate shoes for outdoor play now that the cold and wet weather is upon us. If at all possible could parents send in a spare pair of wellies for their child to keep at the setting. The bumblebees are loving going outside and splashing about.

Could parents also please make sure to label clothing, coats, shoes and other items coming into the nursery. We try our best to remember what belongs to who but are increasingly busy and want to ensure all items are returned to the appropriate child at the end of the day.



Dragonflies



Room Leader: Stevie
Supervisor: Katy

Practitioner: Stephanie
Apprentice: Keira

Colour of the Month: **Multicolour**

Book of the Week

- My Little Firecracker
- The Rhyming Rabbit
- The Dinosaur that pooped a rainbow
- Hello Winter

Please can you ensure your child has a weather appropriate coat & clothing when they come in so that we can still continue to play outside and can ensure they are comfortable and warm now that the cold weather is here.

Activities

- We will be exploring colours, rainbows and all things multi-coloured.
- 15th November- National Nursery Rhyme week.
- We will also start introducing winter themed activities

We will be sending out weekly activity updates and home learning ideas via the parentzone app so keep your eye out for these!



Caterpillars



Room Leader: Sarah
Supervisor: Arpana

Practitioner: Stephen
Practitioner: Lucie

Apprentice: Amber

Book of The Week

- Poppies and the blooms
- Rhyme Crime
- Peace at last
- The highway rat

Please can you ensure you are sending your child in with weather appropriate clothing including winter coats, hats, boots, wellies and gloves.

Activities/Themes

- 15th November- Nursery Rhymes week. We will be singing lots of nursery rhymes. If you or your child has any favourites, please let us know.
- 17th November- Children in need pyjama party and Pudsey the bear activities.
- Themes- Light & Shadow, Bonfire night, Remembrance Day, autumn, Thanksgiving (Talking about what we are all thankful for)
- We will also be starting to teach the children Christmas songs halfway through the month so that we can bring lots of Christmas cheer in December.

Butterflies

Room Leader: Ciara
Supervisor: Shannon

Practitioner: Shay
Practitioner: Lainey

Books of the week:

- Funny Bones
- We're going on a bear hunt
- Bear's winter house
- The scarecrows wedding

Themes of the Month:

- Remembrance Day- We are going to be creating something very special for this, please keep a look out at the front of the nursery!
- Bonfire Night- We will be exploring this through colours and colour mixing.
- Hibernation- We will be exploring where animals live, and the types of animals get ready for a long winter sleep, through den building and role play.

Continental Breakfast

Each month we will be having a breakfast from a different country around the world. This month on November 14th we will be having 'Smorgas' from Sweden

Penpals Around the Globe

The Butterflies are taking part in creating small packages for nurseries around the world. They are creating their own drawings to send to them, making Halloween and Christmas cards and thinking of questions that they would like to ask. We will be using this experience to explore the different countries and their cultures, traditions, languages and food. We will not be sending photographs of the children or any personal information relating to the children.

Butterflies Christmas Carol Service
Thursday 14th December, 2023
5pm-5:45pm

The cold and wet weather is now upon us. Please could we ask that children come to nursery in appropriately warm clothes. Could they also please bring wellies that are clearly labelled with their names and can be left at the nursery for outdoor play. We are also starting to run low on spare clothing. If you have any of the nursery spare clothes items at home, could they please be returned.



Pumpkin Carving Contest Winner: Holly



Runner Up: Remi

Well done girls! And thank you to everyone that participated all the pumpkins were amazing!

Show & Tell

This month, for our show and tell on Thursday November 16th we will be having a special guest, Albie, Lainey's pet Rabbit. Children are still invited to bring in a toy from home to share.

Funding & Tax Free Child Care Guide

Tax Free Childcare

You can get up to £500 every 3 months (£2,000 a year) for each of your children to help with the costs of childcare.

If you get Tax-Free Childcare, the government will pay £2 for every £8 you pay your childcare provider. This is paid via an online childcare account that you set up for your child. You can get Tax-Free Childcare at the same time as 30 hours free childcare if you're eligible for both.

Tax free Childcare can be used for approved childcare cost including:

- Deposits
- Fees
- Additional Meal cost

Your eligibility depends on:

- if you are working
- your income (and your partner's income, if you have one)
- your child's age and circumstances
- your immigration status

If you are working you can usually get Tax-Free Childcare if you (and your partner if you have one) are:

- in work
- on sick leave or annual leave
- on shared parental, maternity, paternity or adoption leave
- If you're on adoption leave, you cannot apply for the child you're on leave for unless you're going back to work within 31 days of the date you first applied.

If you're not currently working you may still be eligible if your partner is working, and you get Incapacity Benefit, Severe Disablement Allowance, Carer's Allowance or contribution-based Employment and Support Allowance.

You can apply if you're starting or re-starting work within the next 31 days.

For additional information or to register for a tax free childcare account please visit

<https://www.gov.uk/tax-free-childcare>

3 & 4 Year old Government Funding

All children in England are entitled to 15 hours per week government funding for 38 weeks of the year. This will come into effect the term following your child's 3rd birthday and

Child Turns 3 Between	Term child first becomes eligible for	Funding start date
1 st April 2023-31 st August 2023	Autumn Term 23	4 th September, 2023
1 st September 2023-31 st December	Spring Term 23	8 th January, 2023
1 st January 2024-31 st March 2024	Summer Term 24	15 th April, 2024
1 st April-31 st August 2024	Autumn Term 24	2 nd September, 2024

The 15 hour entitlement is automatic and there is no need to apply for it. However you will need to sign off funding form which is provided and held by the nursery.

Some 3 to 4 year olds are also eligible for the extended 30 hours funding. To check your eligibility or to apply for the funding please visit www.gov.uk/30-hours-free-childcare

You can apply for your funding code once your child is 2 years and 36 weeks old.

Once you have received your funding code please send this to parents@radnorparkkindergarten.com along with the name, date of birth and national insurance number of the parent who applied for it.

Using your Funding at Radnor Park Kindergarten

At Radnor Park we have some specific policies relating to the use of government funding. The policies can be found in our FEE structure. If you have not received this or need a new copy please contact parents@radnorparkkindergarten.com for your copy. Please see below however for a guide to using you funding.

- Once child turns 3 their funding will take effect the following term.
- Parents must sign off a funding form provided by nursery or we will not be able to apply for your funding.
- If your child will be using **15 hours** government funding they must either:
 - Attend afternoon sessions M-F 1pm-6pm which will incur no additional weekly fee's or:
 - If you would like them to attend morning/all-day session than your child will need to be registered for a minimum of 16 hours a week. The charge for the 16th hour is £24.80. Any additional hours on top of the 16 hours will be charged at £6.80/hr.
- Please ensure you provide this information to us to prevent your child incorrectly being registered for the funded afternoon sessions.
- If your child will be using **30 hours** government funding you will need to first provide your funding code and parent information to us so that it can be verified.

- Then if you require any additional session you must let us know what they are so that we can check for availability and reserve their space please do this as soon as possible to ensure you don't miss out on your desired spaces. Please be aware when deciding on sessions that they must either:
 - Attend afternoon sessions M-F 12pm-6pm which will incur no additional weekly fees or:
 - If you would like them to attend morning/all-day session than your child will need to be registered for a minimum of 31 hours a week. The charge for the 31st hour is £31.65. Any additional hours on top of the 16 hours will be charged at £6.80/hr.
- Please ensure you provide this information to us to prevent your child incorrectly being registered for the funded afternoon sessions.

Do you know who you can talk to?

If you have any queries or concerns, big or small, or you would like to talk to someone about your child. We are here to help!



Ting Healey Owner-
Invoices, Funding,
Sessions and FEE'S



**Emily Sargeant Setting
Manager-** Designated Child
Protection Officer, SENCO



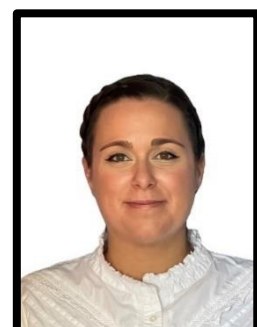
Emma Reene Deputy Manager-
Special Educational Needs and
Disability Officer, Deputy
Designated Safeguarding Lead



**Tracey Leighton Duty
Manager-** Health and Safety
Officer, Deputy Designated
Safeguarding Lead



Chloe Tidy Duty Manager-
Online Safety Co-Ordinator,
Deputy Designated
Safeguarding Lead



**Brenley Martin
Administrator-** New
Applications, Funding
Support, Sessions and
FEES



What is a Talking Walk-in?

- Play based session at a Children's Centre
- Parents attend with their pre-school child if concerned about their speech, language or communication
- Opportunity to access advice from SLT and further support if required
- For most referrals, a Talking Walk-in will be the first contact with the SLT service
- Invited sessions: families known to the service (i.e. accepted referrals) invited to attend
- Drop in sessions: start September Ashford & Folkestone, November – Dover/Deal– anyone can walk-in

10

Launch of Talking Walk-ins



- Open access to drop ins for pre-school children from September
 - Dover will initially be offering invite-only sessions to clear backlog, with drop in sessions to be offered from November 2023
- Information on Children's Centres' Facebook pages and our website [EKHUFT Talking Walk-ins](#).

Folkestone /Shepway Area Talking Walk ins

Encourage families to access their local Children Centre but can attend others – all in morning 10.30 - 11.45 (likely change to 9.30 - 11.45 term 2)

Need parent to accompany or clear parental/carer consent.

Children must live within Shepway /Ashford /Dover- Deal area

1 st Tuesday of month	Caterpillars CC
2 nd Wednesday	Folkestone Early Years CC
3 rd Monday	Village CC
4 th Wednesday	New Romney (not December)



Staffed by 2 SLTs, SLTA and Children Centre Staff Member

Community Support & Wellbeing Resources

Food & Essentials

The Salvation Army: [salvationarmy.org.uk/Folkestone](https://www.salvationarmy.org.uk/Folkestone)

Hythe Pantry: www.facebook.com/RainbowCentre01

Dover Pantry: www.facebook.com/doverpantry twitter.com/Doverpantry

Bechange Community Fridge: www.bechange.org.uk/support-services/community-fridge

Folkestone Community Fridge: www.facebook.com/Folkestonecommunityfridge

The Bread & Butter Thing (weekly food bags): www.breadandbutterthing.org/members

Food Sharing Apps: OLIO (Connects neighbours with each other and local businesses)

Too Good to Go (Anti food waste app linked to local café's & restaurants)

Financial Support

Help for Households: www.helpforhouseholdscampaign.gov.uk

Cost of living Support: www.gov.uk/cost-of-living

Citizens Advice: citizensadvice.org.uk/dept-and-money/get-help-with-the-cost-of-living

Home Essentials in a Crisis: kent.gov.uk/social-care-and-health/care-and-support/benefits/home-essentials-in-a-crisis

Mental Health

NHS Psychological Therapies Service- www.nhs.uk/services/mental-health/find-a-psychological-therapies-service (Common mental health issues including anxiety, depression and the need for counselling)

Folkestone Safe Haven: www.hestia.org/folkestone-and-hythe-district

South Kent Mind: www.southkentmind.org.uk

Lighthouse43: www.lighthouse43.co.uk

Samaritans: Call 116 123

Mind Information Line: 0300 123 3393

Rethink Mental Illness Helpline: 0808 801 0525